

Installation of Kuryakyn Curved License Plate and Turn Signals

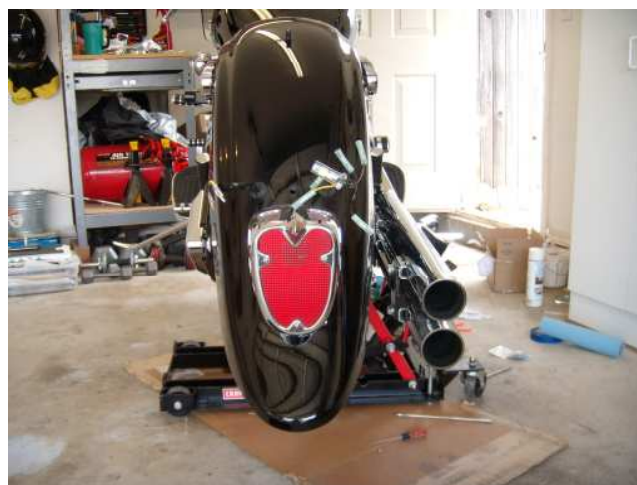
By: V-Star for Vendetta (BigrayVstar)



- Kuryakyn makes an awesome unit for the Roadstar and with a little work it will fit the Vstar Classic as well.



Original Plate and Signal



- Remove your existing license plate and turn signals. All the wiring connectors are in the mounting housing for the license plate and easily disconnected. Remove the rubber grommets and pull the wires inside the fender. You will need some room so before pulling the wires you need to “flip up” your fender



- Remove the large back bolt on both sides of the fender mounts.



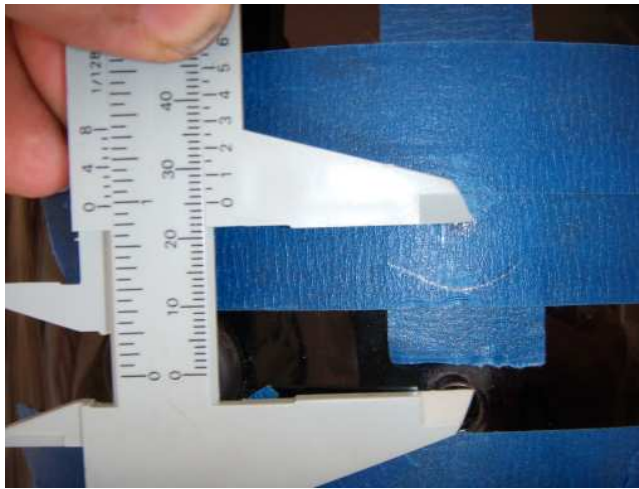
- Loosen the two front bolts and you can then flip up the fender. Be CAREFUL here...if you don't re-tighten the bolts it will fall back down on your head (OUCH).



- Next mask off your fender to protect it from scratches.



- Have a partner hold the new unit and figure out how it looks best to you. Take a pencil and draw along the curve of the top mounting point then measure the distance from this edge to your new mounting hole on the new unit.



Mine was about 25mm



- Lift up your fender and place a 2X4 on top of the tire to protect your tire from the drill. Drill a 5/16" hole for the top spot.



- Mount the new unit and leave it loose so you can align the new unit with the fender. When it all looks level use your pencil to mark the curves under the bottom two remaining mounting positions. Measure the distance to the center of the two new holes like you did the first and transfer the marks to your masking tape. I used a 5/16" bit so I would have enough wiggle room to move the bolts around if I wasn't perfect with my hole positions.



- The left hole hit a wire tab edge so I cut it off and smoothed the edges with a dremel.



- Make sure you clean up the rough edges around the holes and then paint to prevent rust.



- Replace your grommets and run the taillight and license plate wires through the fender.
*Note: mount your license plate to the holder first before you run the wire for the plate through the fender.
- If you don't have a shop or Clymer manual here are the wire colors.
Grounds – BLACK
Left Signal – BROWN
Right Signal – GREEN
Running Light for License Plate – Blue
- Connect these to the appropriate wire on the Kuryakyn unit. For the License plate light you will need to buy a couple of bullet style female connectors and use two short pieces of wire. Crimp a bullet connector to one end of each wire. Splice one to a ground wire and the other to the blue running light wire. I chose to solder these in since it is the best type of connection. I also used heat shrink tubing over the soldered connections for a good seal. Connect the two new wires to the tag light. Your tag is now illuminated and you keep your original running light.



- Tye wrap the wires up and place them in the fender tabs to keep them off of the wheel.
*Note: If your bike is J-Slammed like mine take extra care to position the wire bundle as flat and far up as possible to prevent contact with the tire.



- Tighten everything back down and you're done!